



COMUNE DI LAMPEDUSA E LINOSA

PROVINCIA DI AGRIGENTO

OGGETTO: PROGETTO ESECUTIVO PER L'AMPLIAMENTO E SISTEMAZIONE DEL CIMITERO COMUNALE DI LAMPEDUSA, SITO IN ZONA CALA PISANA.



ELABORATO
2.5

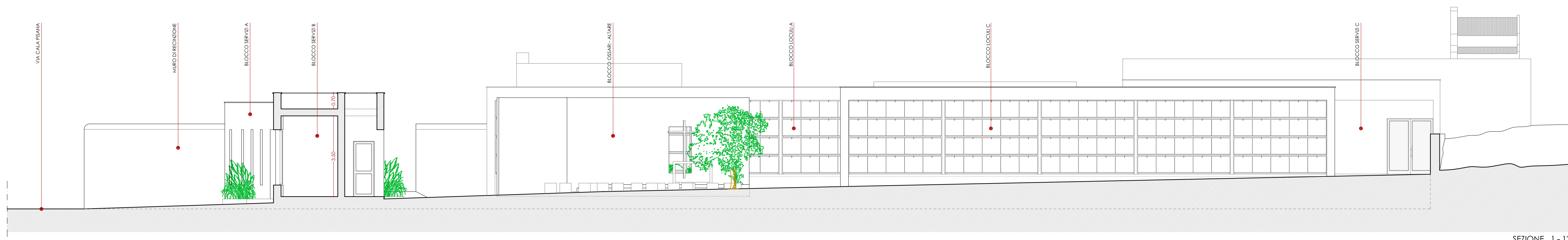
ELABORATI ARCHITETTONICI:
• PROFILI - SEZIONI DI PROGETTO

REV. DEL

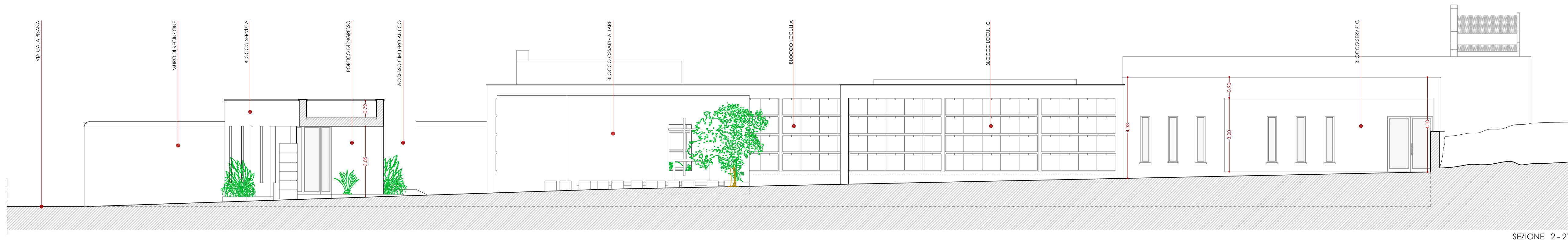
IL SINDACO

IL R.O.P.

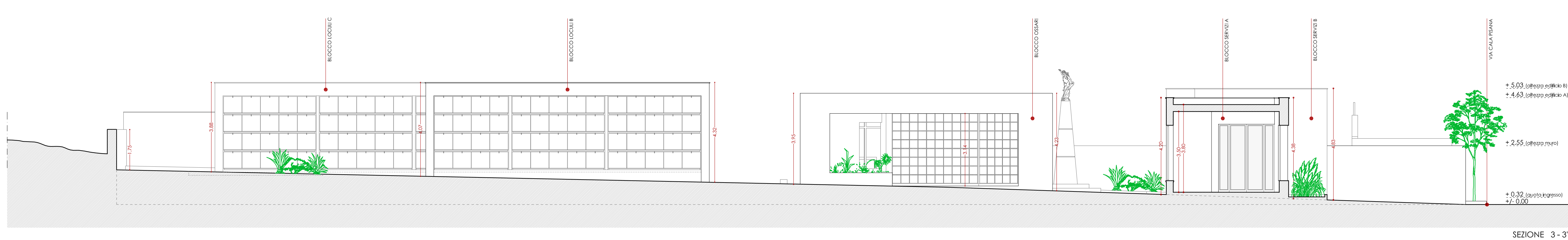
Giuseppe Architetto Uicola
VIALE DOTT. VITTORIO P.B.
92030 - G. L. I. I. I. (A.G.)
www.giuseppearchitetto@virgilio.it
tel. 093 4543237
Fax 093 4543844
Studio di Architettura
1987
Lampedusa e Linosa (AG), It.



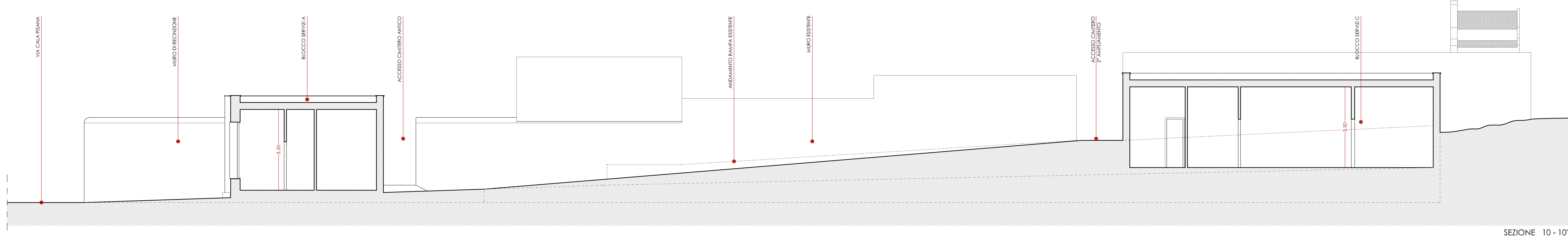
SEZIONE 1 - 1'



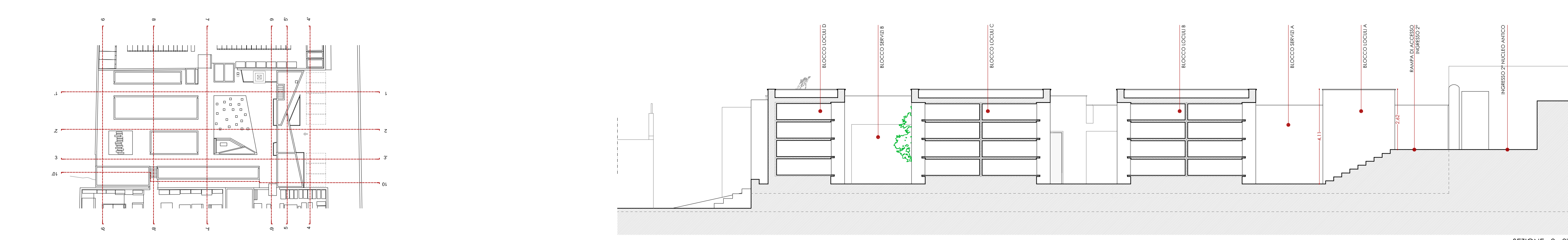
SEZIONE 2 - 2'



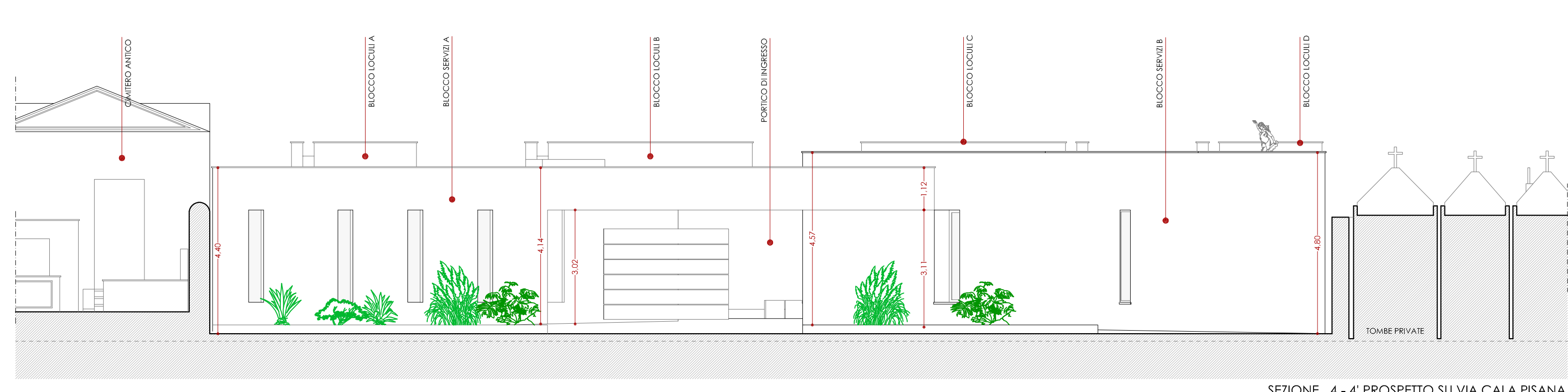
SEZIONE 3 - 3'



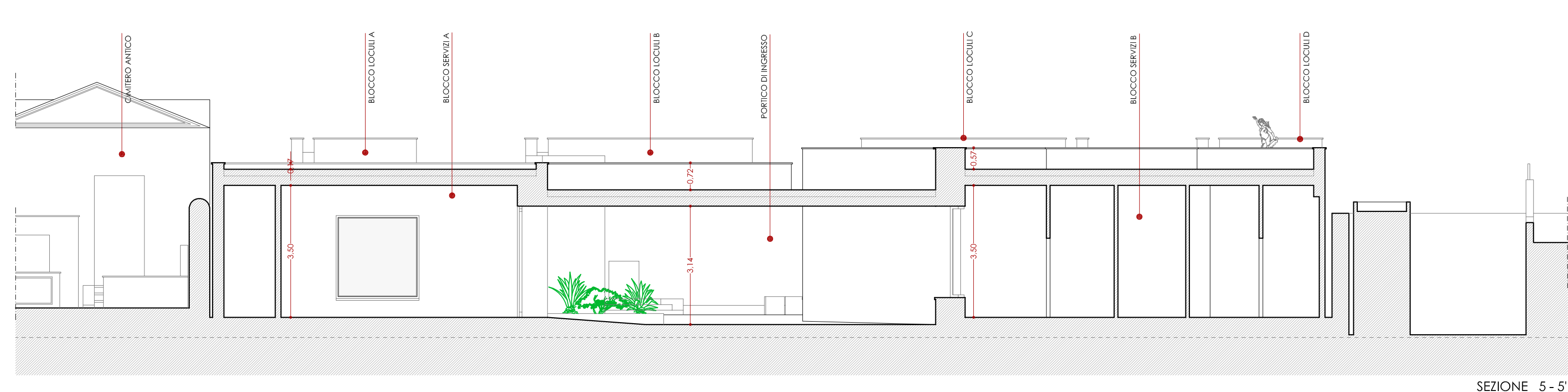
SEZIONE 10 - 10'



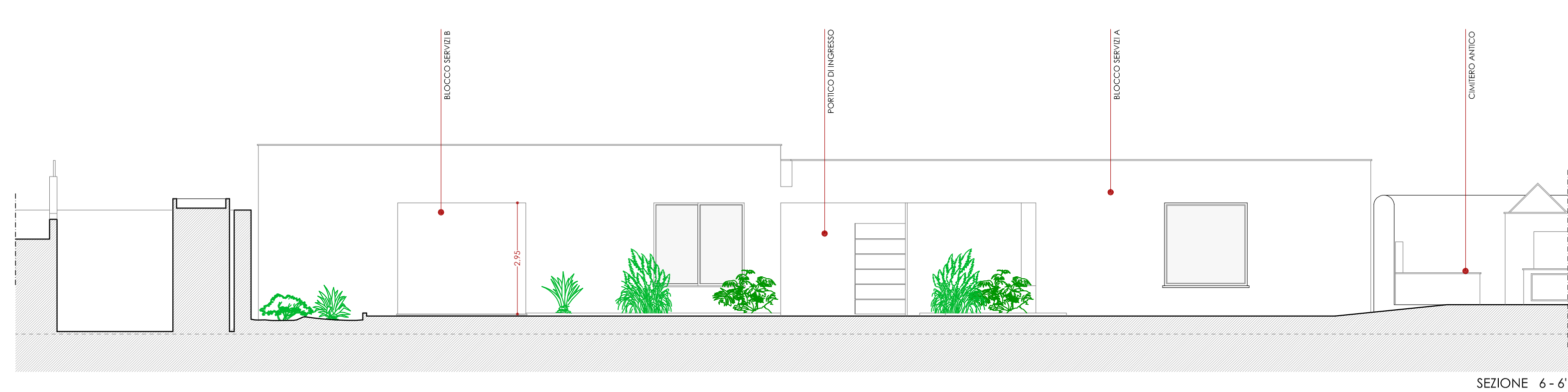
SEZIONE 8 - 8'



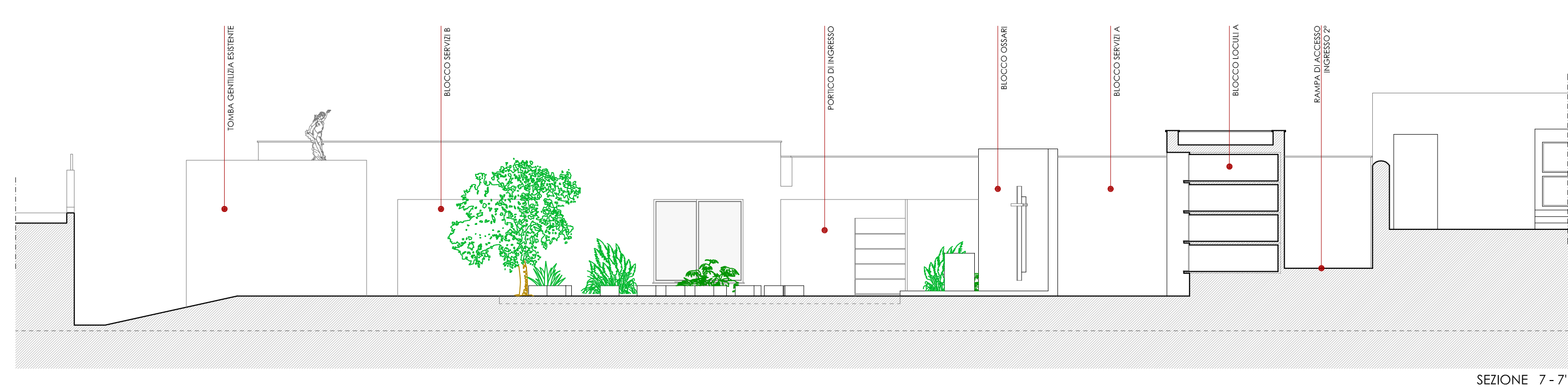
SEZIONE 4 - 4' PROSPETTO SU VIA CALA PISANA



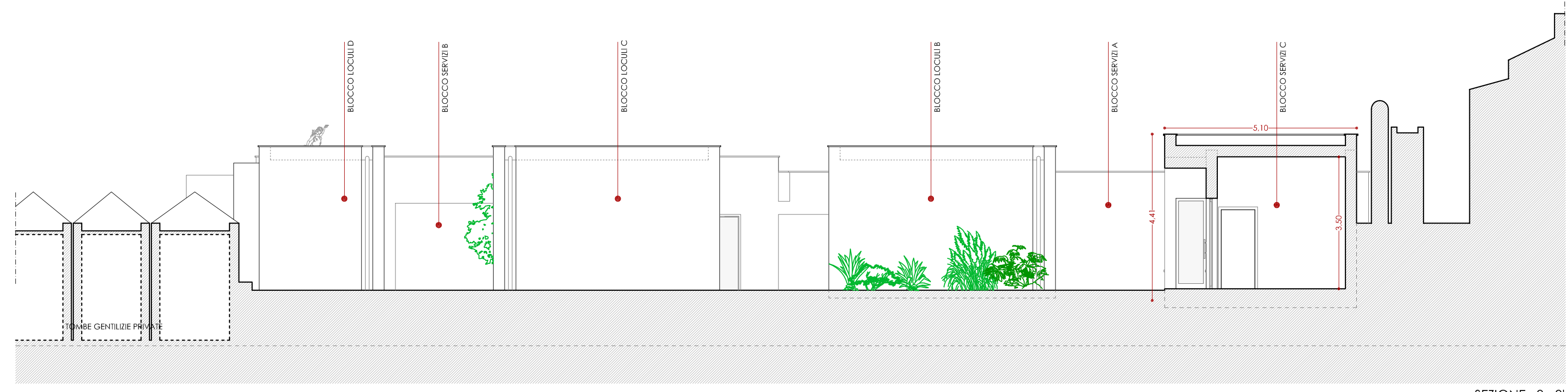
SEZIONE 5 - 5'



SEZIONE 6 - 6'



SEZIONE 7 - 7'



SEZIONE 9 - 9'